



TR-5 S2
LOUDSPEAKER

MANUAL

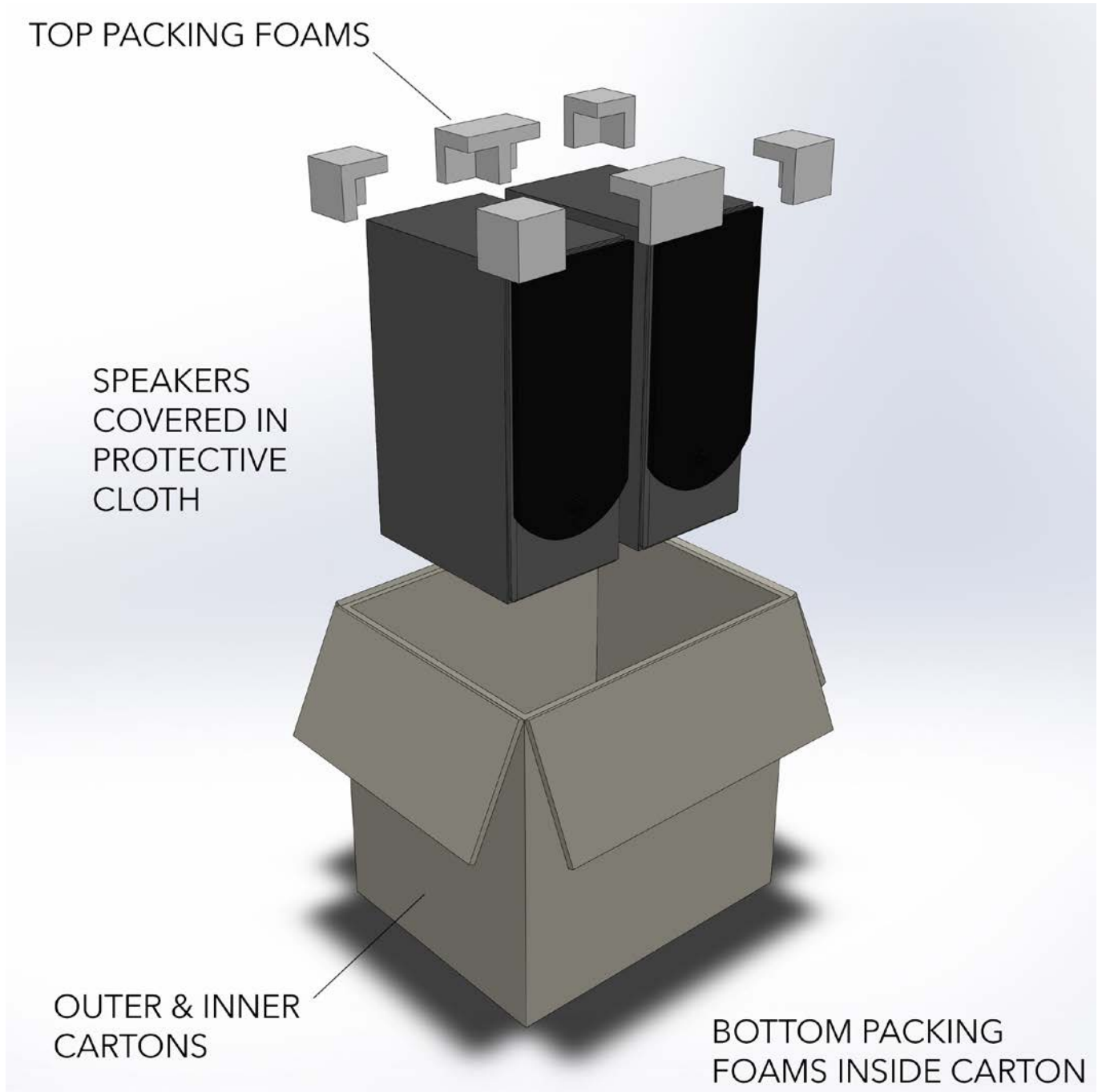


Congratulations on your purchase of the Roksan TR-5 S2 loudspeaker. This Loudspeaker is designed and manufactured to the highest specification and rigorously tested to offer you many years of trouble-free pleasure.

Correct installation, set-up and operation will have a profound influence on the sonic performance of the entire hi-fi system. Please read the contents of this manual thoroughly. It will help you to understand your hi-fi equipment better and enhance your listening pleasure.



UNPACKING



After unpacking please retain all packing materials. Correct packing is necessary for future transportation of your TR-5 S2 Loudspeakers.



MAINTENANCE AND CAUTIONS

To maintain the appearance of the TR-5 S2 loudspeaker, occasionally wipe the cabinet surface with a lightly dampened soft cloth or chamois leather.

NOTE: DO NOT wipe, press or pierce either of the drive units as this could cause permanent damage to them.

Avoid use of abrasives or solvents.

Your TR-5 S2 loudspeakers are high quality audio devices, therefore care must always be taken to transport, position and operate the units correctly.

DO NOT expose the loudspeakers to extreme climatic conditions such as excessive cold, heat, sunlight, rain humidity or water etc.

DO NOT attempt to install the loudspeakers until you have read and understood all the necessary operational parameters and installation instructions regarding your TR-5 S2 loudspeakers.

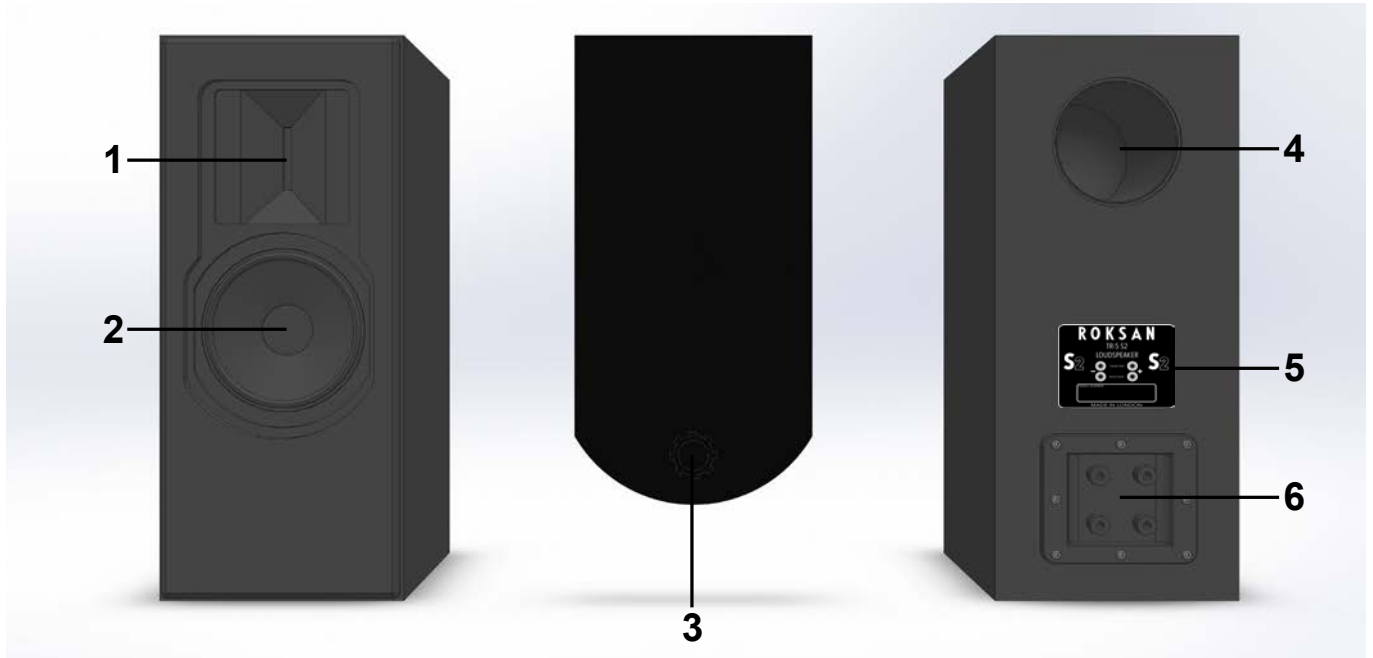
DO NOT make any connections between the amplifier and the loudspeakers whilst the amplifier is switched on. (Always refer to the amplifier user manual)

The TR-5 S2 loudspeakers contain no user serviceable parts. Do not remove any drive units/panels or attempt to service the loudspeakers yourself. Unauthorised servicing will void the warranty.



INSTALLATION

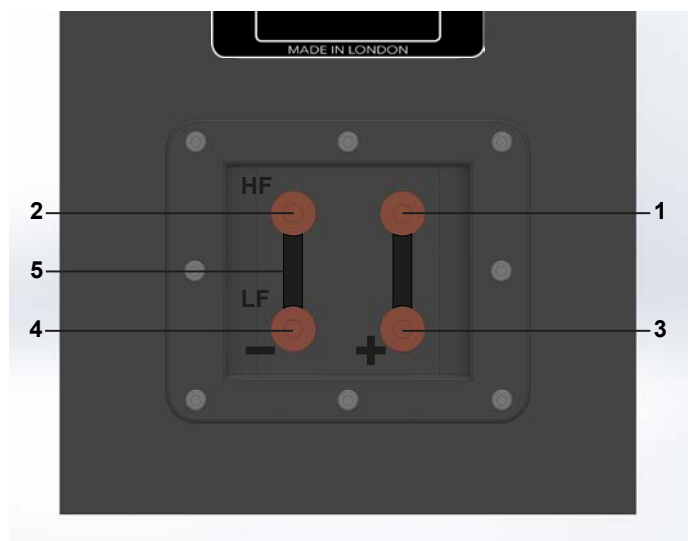
TR-5 S2 LOUDSPEAKER FRONT AND REAR VIEW



1. High frequency Ribbon tweeter
2. Low frequency woofer
3. Loudspeaker grille
4. Rear firing bass reflex port
5. Product label
6. Speaker terminal panel

TR-5 S2 LOUDSPEAKER TERMINAL PANEL VIEW

1. Tweeter Input terminal (+)
2. Tweeter Input terminal (-)
3. Woofer Input terminal (+)
4. Woofer Input terminal (-)
5. Tweeter / Woofer 'Jump-bars' (removable)



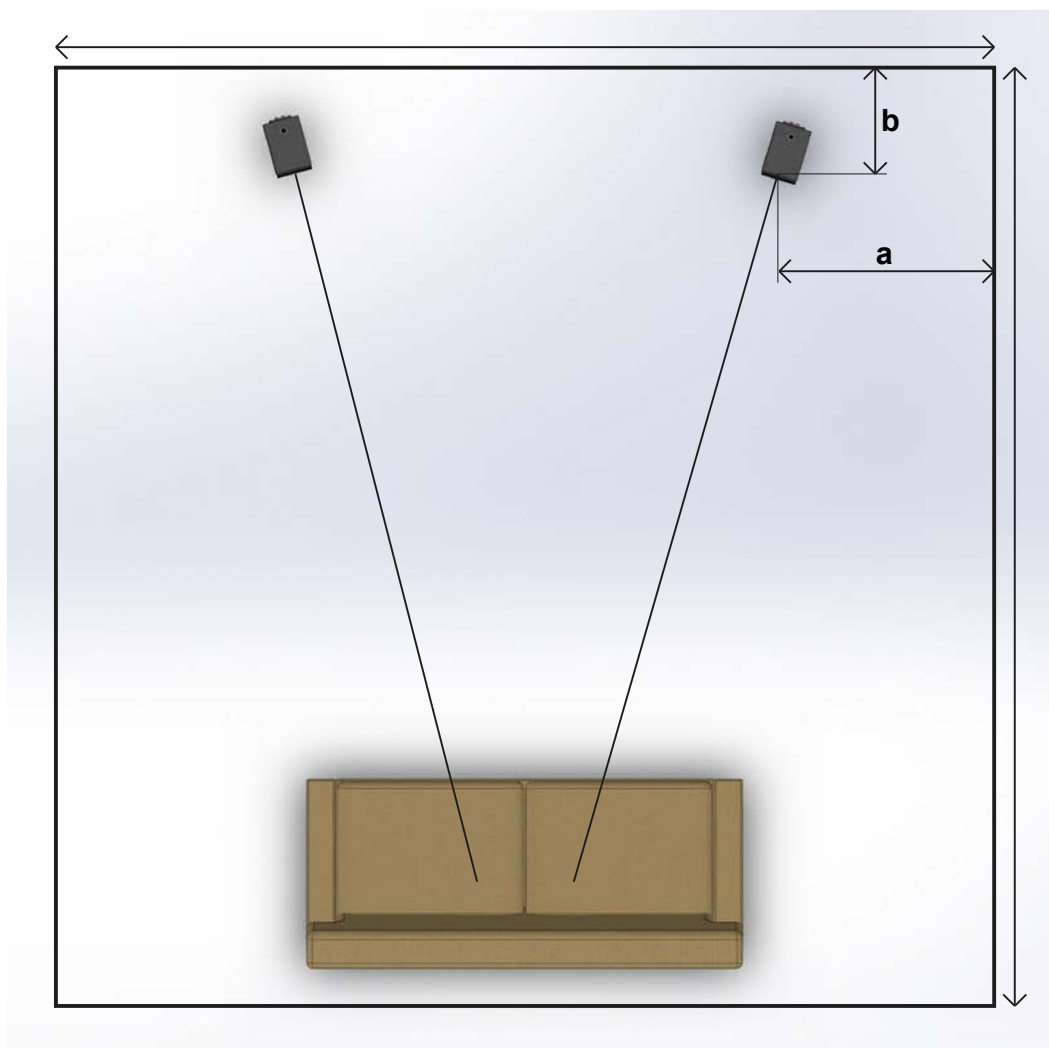


POSITIONING AND PLACEMENT

The positioning of the loudspeakers is very important to successful installation. The key is to find the best compromise between room constraints and performance.

See the diagram below for general guidelines on positioning. Note that this is only a guideline and an 'ideal'. Every room is different and some experimentation of positioning will result in the best sonic performance.

Placing one or both of the speakers in a corner or an alcove will result in a decrease of sonic performance (such as 'booming' bass) and is best avoided.



- Distance of a & b should be equal on both loudspeakers
- Loudspeakers should be approximately 2 m apart
- Speakers should be symmetrical to the listening position
- Speakers should be between 0.5 - 1 m from rear wall
- A small angled 'toe-in' of 10-15 degrees (depending on distance from listening position) will ensure increased sound staging and imaging. 'Fine tune' this angle for optimum performance.



SETUP

CONNECTING LOUDSPEAKER CABLES - CONVENTIONAL

Please refer to earlier speaker terminal panel view

There are two sets of terminals the upper set corresponds to the tweeter (HF) and the lower to the woofers (LF). There is a small illustration printed on the rear label for your reference. The TR-5 S2 loudspeaker comes supplied with a set of two removable 'jump-bars' already connected. To connect the loudspeaker conventionally, simply attach your speaker cable to the lower set of terminals marked 'woofer' (LF). Make sure that both loudspeakers are connected in the correct polarity with respect to the output terminals of your amplifier:

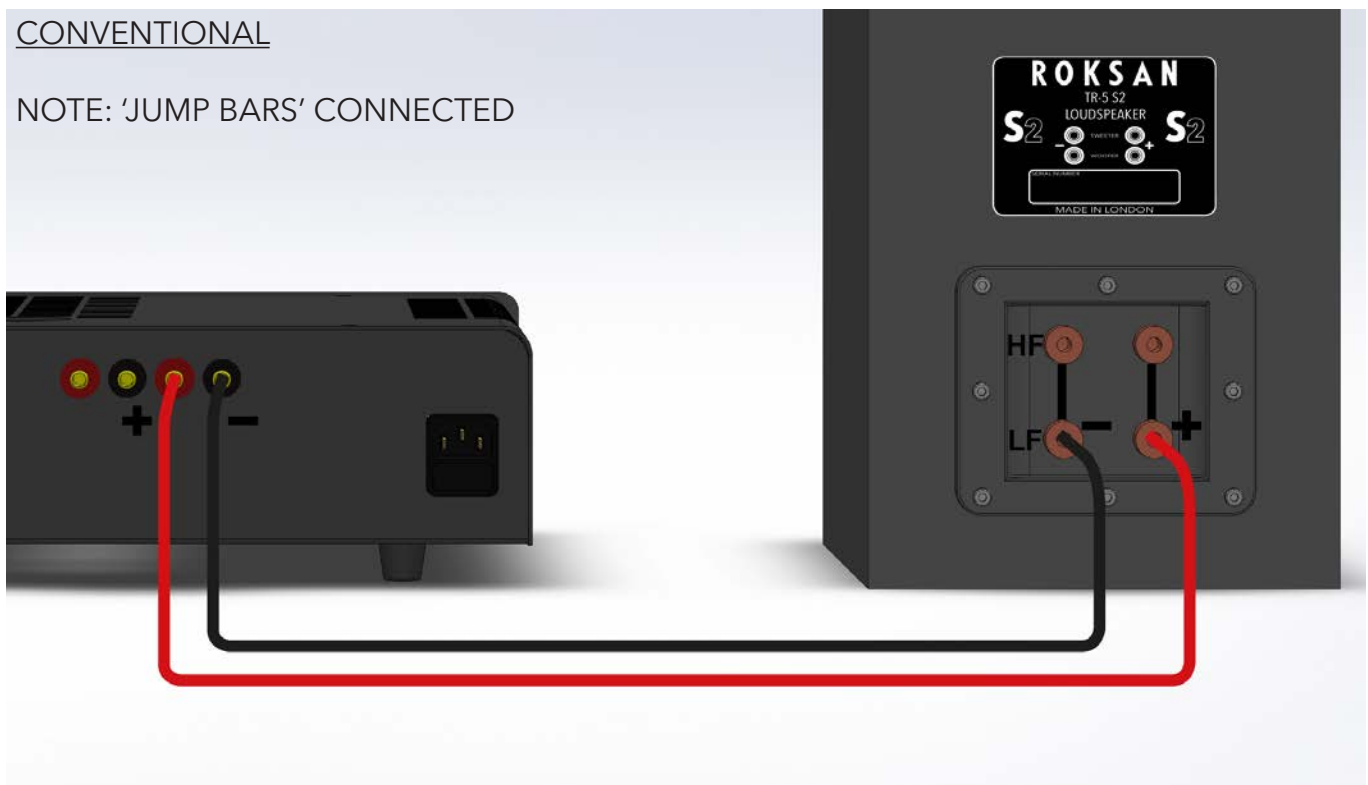
RIGHT → *RIGHT* *and* *LEFT* → *LEFT*
and
or RED → RED *and* BLACK → BLACK
 +VE → +VE *and* -VE → -VE

IMPORTANT:

Always switch the amplifier(s) off before attempting to connect or disconnect the speaker cables to/from your loudspeakers. Failure to do this may cause permanent damage to the amplifier and/or the loudspeakers.

CONVENTIONAL

NOTE: 'JUMP BARS' CONNECTED



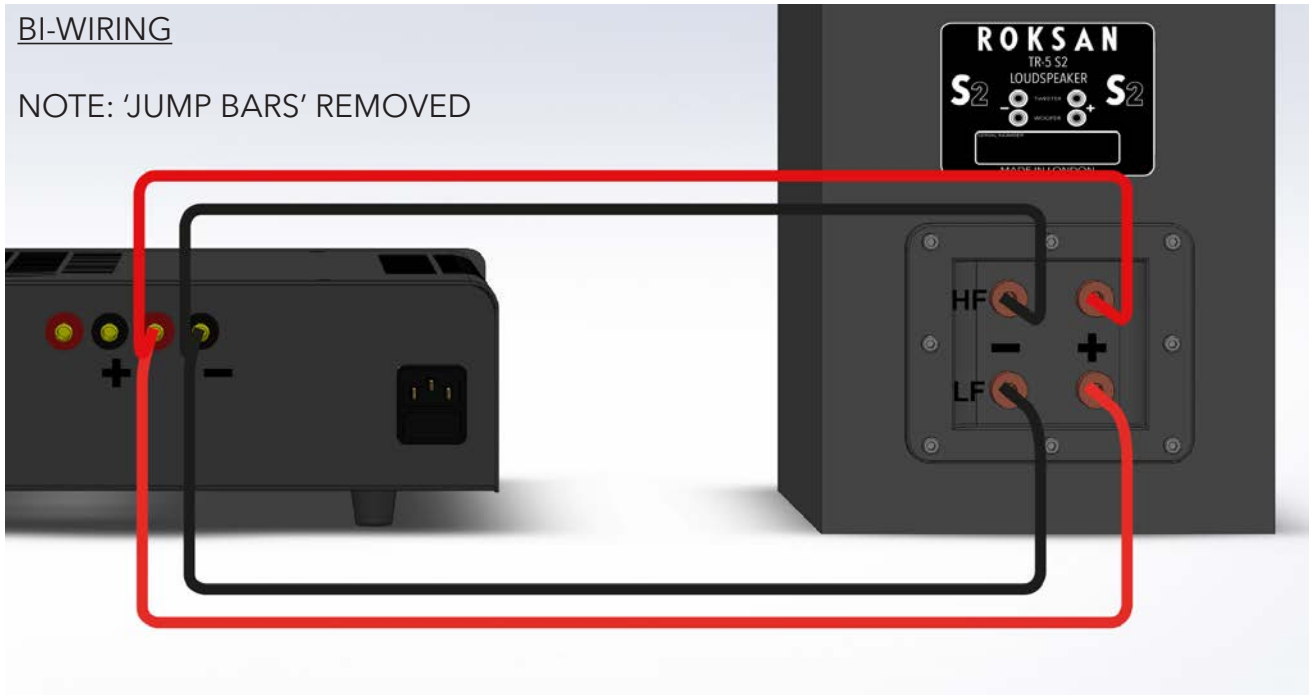


CONNECTING LOUDSPEAKER CABLES - BI-WIRING / BI-AMPING

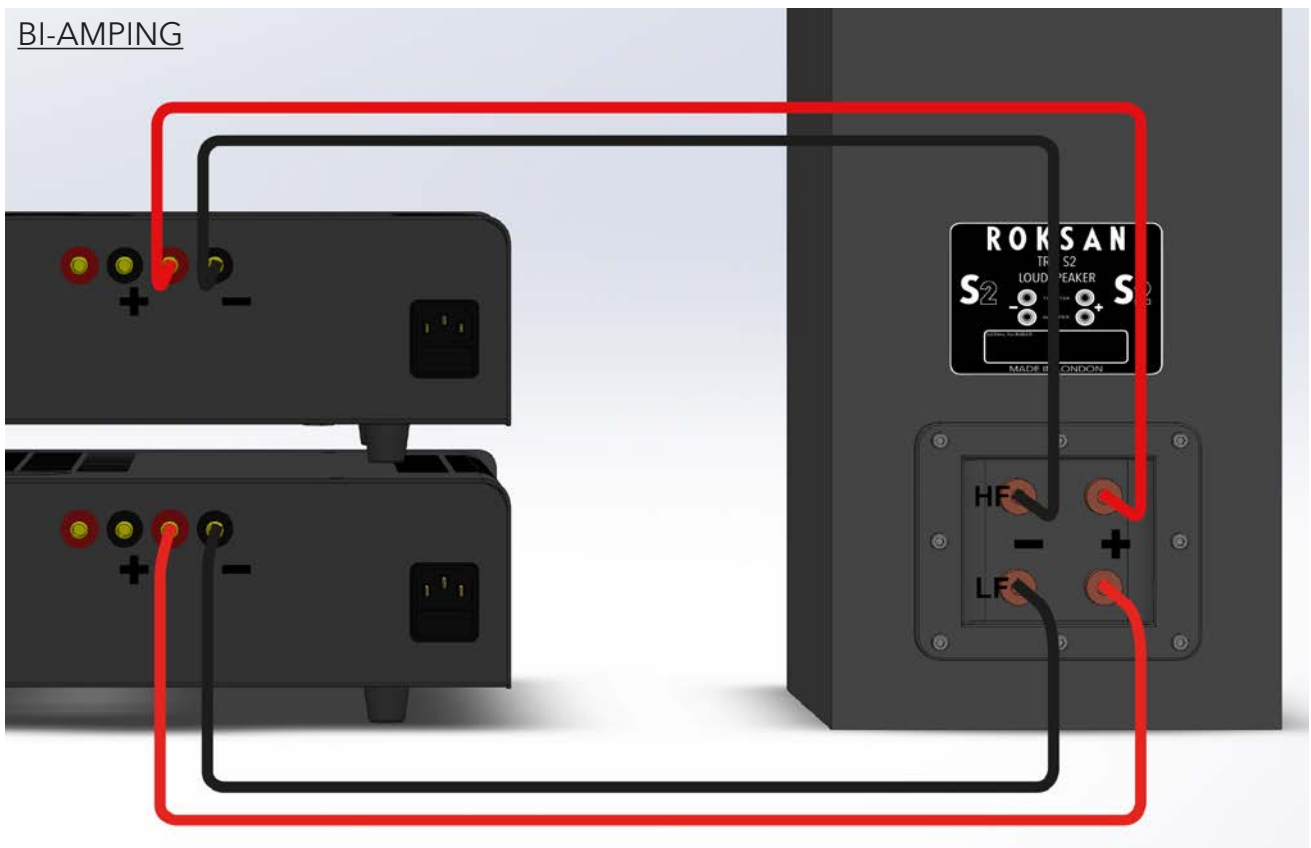
Your TR-5 S2 is bi-wirable. This is achieved by removing the 'jump-bars' from the terminals and using one set of loudspeaker cables for the tweeter connections and another set (of equal length) for the woofer connections.

BI-WIRING

NOTE: 'JUMP BARS' REMOVED



BI-AMPING





NOTE: For optimum performance it is recommended to use high quality cables such as Roksan HDC-02S High Definition Speaker Cable (3mm² conductor area). Many speaker cables such as the Roksan HDC-02S are directional. Please observe this directionality. DO NOT use speaker cable with conductor size less than 16 AWG (1.3mm²). The binding posts comfortably accept conductor sizes up to 12 AWG (3mm²).

LOUDSPEAKER STANDS

For optimum sonic performance it is necessary to locate each of the loudspeakers as rigidly as possible on the speaker stands and the stands on the ground. Refer to the speaker stand user manual for correct installation.

OPERATION

After all the connections to the loudspeakers have been made correctly, you can switch on your amplifier(s). Always ensure that the volume setting is set at minimum before playing any music through your loudspeakers.

Check if there is any audible 'hum' in the system by listening to the loudspeakers without playing any music and gradually increase the volume. If there is any 'hum' or 'buzz' consult your appointed Roksan retailer or distributor.

FINAL POSITIONING

NOTE: Your loudspeakers will require at least 48 hours of continuous music programme at reasonable volume to allow the various moving parts of the drive units and other component to 'run-in'. Once run-in, the bass will increase in definition, extension and speed and articulation whilst the treble will sound more smooth and open.

When setting-up or testing your loudspeakers, choose music material that you are familiar with sit in the central listening position.

Your TR-5 S2 loudspeakers will continue to improve in performance over the first few weeks of use and you should fine-tune the sound over this period if so desired by altering the positioning in small increments. The loudspeakers should begin to 'disappear' as you approach the ideal position of the loudspeakers in your room. For best results keep experimenting. This will increase your understanding of the way the loudspeakers interact with your room and improve the performance of your entire audio system. A final adjustment in levelling of the speaker stands/spikes should be carried out after the optimum position/location of the speakers in the room is established.



TROUBLESHOOTING

If you suspect that your TR-5 S2 loudspeakers are not operating properly, you should check all the connections carefully. Pay particular attention to speaker phasing (+ & -) and channel connections. Below are some common problems encountered with suggestions for the possible remedy. The list is not exhaustive: If you have any unresolved problems, please consult your appointed Roksan retailer or distributor.

SYMPTOM	LIKELY CAUSE	SUGGESTED REMEDY
No sound from one or both speakers	<ul style="list-style-type: none">• Speaker cables not connected properly• 'Jump Bars' not connected properly• Amplifier not switched ON• Volume set at minimum	<ul style="list-style-type: none">• Ensure proper connection of cables• Check all connections and tighten the terminal binding posts• Switch amplifier ON• Increase volume
Poor stereo image (not focused/defined) and/or lack of bass	<ul style="list-style-type: none">• Speaker cable connected out of phase• 'Jump Bars' not connected properly	<ul style="list-style-type: none">• Check speaker and amplifier speaker terminals are connected to corresponding cable (check colours and/or markings)• Check all connections and tighten the terminal binding posts
Hum from speakers	<ul style="list-style-type: none">• Incorrect Grounding	<ul style="list-style-type: none">• Check mains polarity and grounding on all connected equipment



GUARANTEE

There are no user-serviceable parts inside your TR-5 S2 loudspeakers. If a fault should develop, refer any servicing to your appointed Roksan dealer, distributor or Roksan approved service agent.

Your TR-5 S2 loudspeakers are guaranteed against any defect in materials and workmanship for a period of two years from the date of purchase.

This guarantee is only effective if the warranty card is validated by the Roksan retailer from whom the equipment was purchased and returned to Roksan within 28 days of purchase.

This guarantee excludes:

- Damage caused due to accident, misuse, neglect and incorrect installation, adjustment or repair.
- Liability for damage or loss during transit from the retailer or purchaser to Roksan or its authorised distributor for the purposes of repair or inspection.

Carriage costs to Roksan shall be borne by the consignor.

All claims under this guarantee must be made through an authorised Roksan retailer. If equipment returned for repair to Roksan is found on inspection to comply with the product specification Roksan reserves the right to make a charge for examination and return carriage.

Unauthorised servicing will void this guarantee.

SPECIFICATIONS

Tweeter _____ High tolerance dedicated ribbon
Woofer _____ Custom designed, 130mm coated paper cast chassis with double magnets
Input Sensitivity _____ (1W, 1m) >88 dB
Impedance _____ >6 Ω
_____ Nominally 8 Ω
Frequency response _____ 39 Hz - 20 kHz (in room response)
_____ 55 Hz - 20kHz (-6dB)
Nominal Power Handling _____ 60 Watts
Peak Power Handling _____ 100 Watts
Dimensions (H x W x D) _____ 370 x 190 x 280mm
Weight (each cabinet) _____ 8kg



Roksan Audio Limited

Jubilee Close
Townsend Lane
London
NW9 8TR

+44 (0)20 8900 6801
info@roksan.co.uk

www.roksan.co.uk

Roksan Audio Ltd TR-5 S2 Loudspeaker User Manual

CLASSIFICATION: General Use Version: 1.10
All specifications are liable to change without notice. E&OE